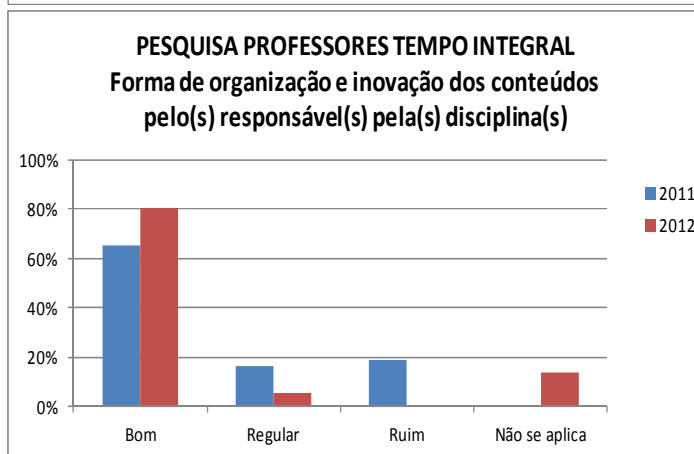
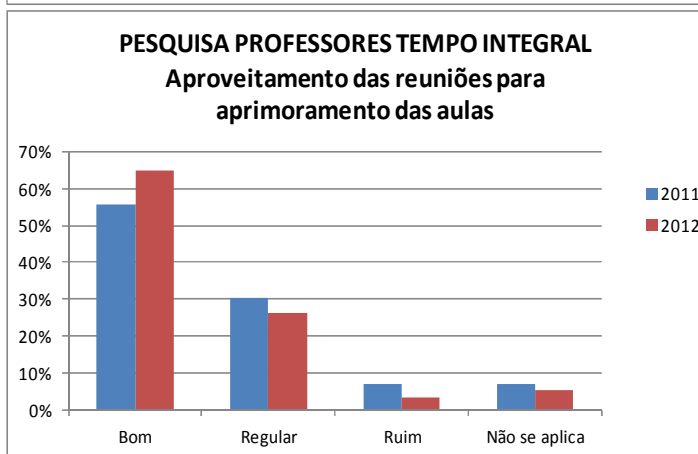
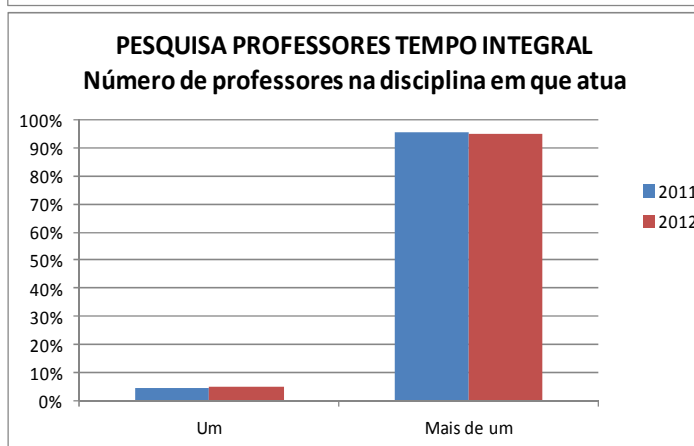
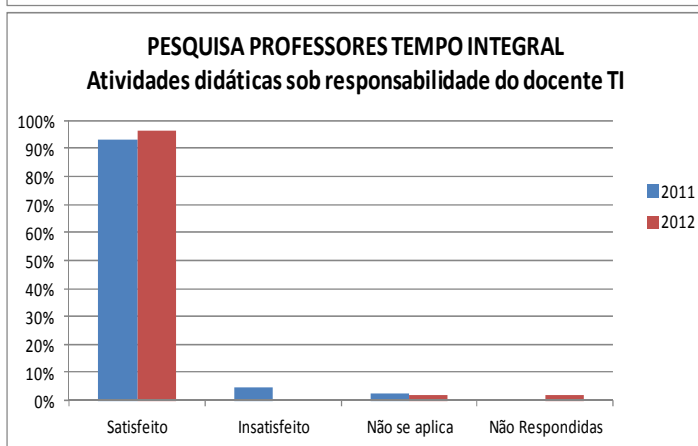
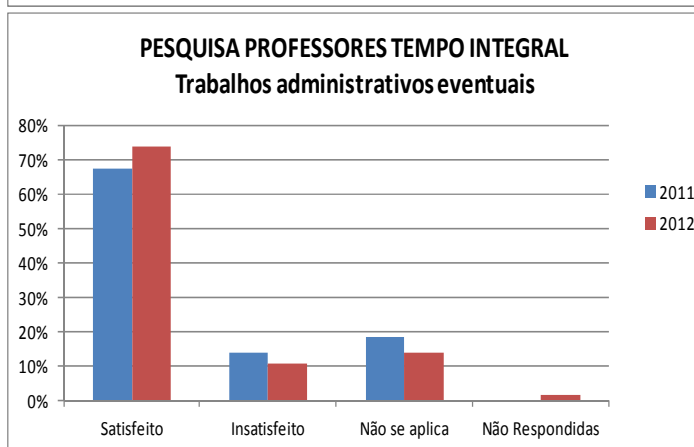
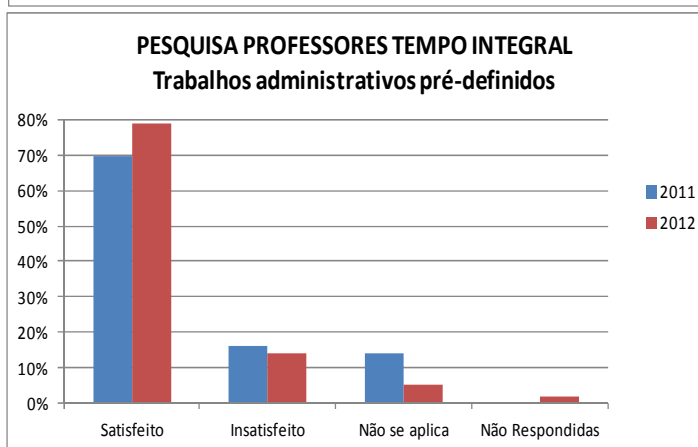
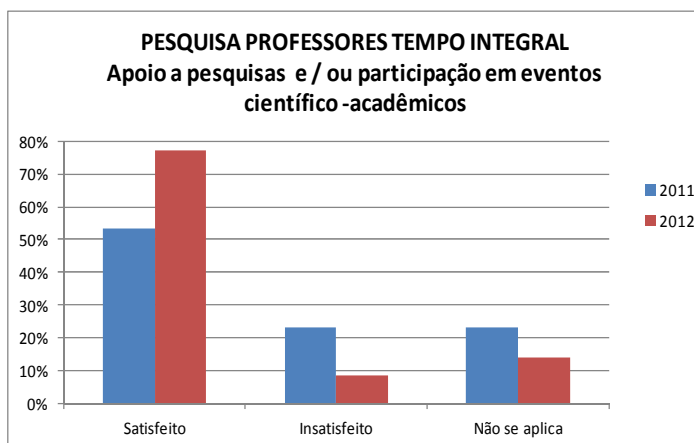
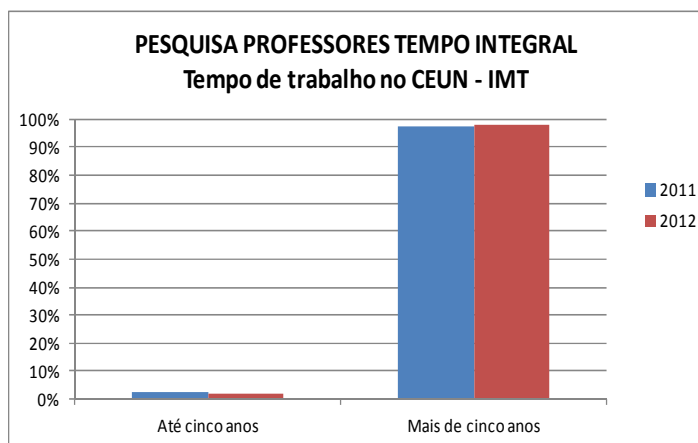


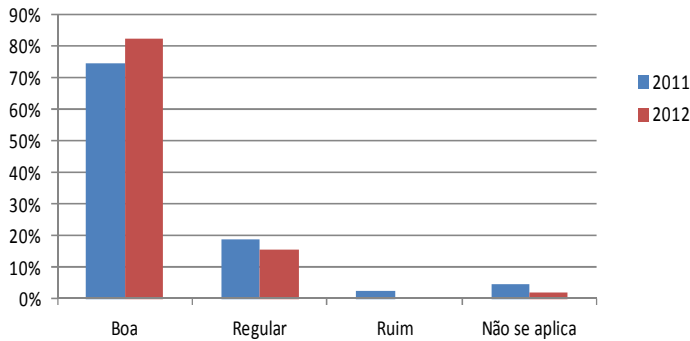
AVALIAÇÃO DOS SERVIÇOS PRESTADOS PELO CEUN – IMT 2011 / 2012

PROFESSORES TEMPO INTEGRAL

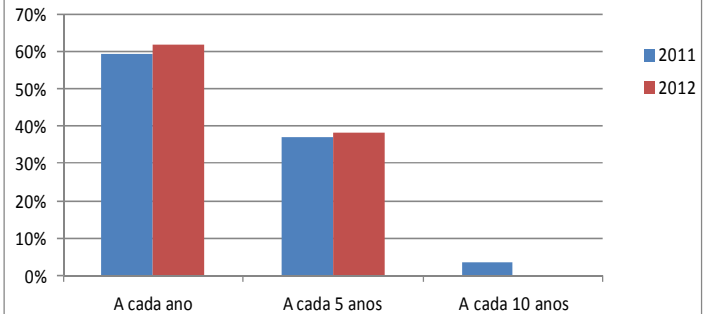
	2011	2012
Professores tempo integral que participaram respondendo ao questionário	43	57



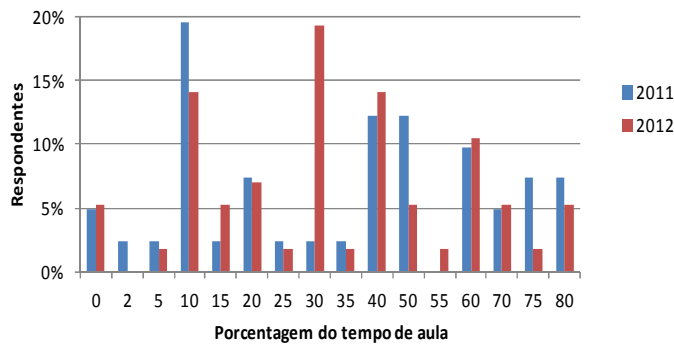
PESQUISA PROFESSORES TEMPO INTEGRAL
Interação entre os docentes da(s) disciplina(s)



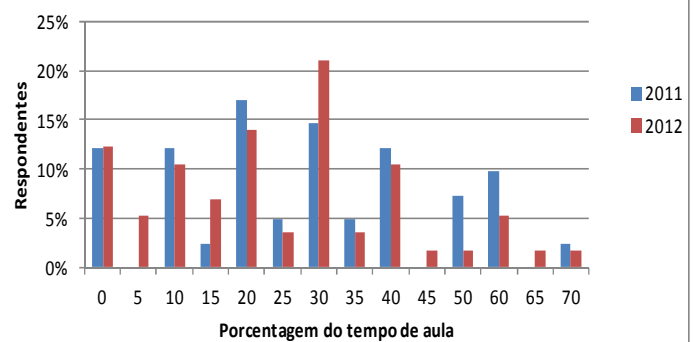
PESQUISA PROFESSORES TEMPO INTEGRAL
Intervalo entre atualizações do conteúdo programático da(s) disciplina(s)



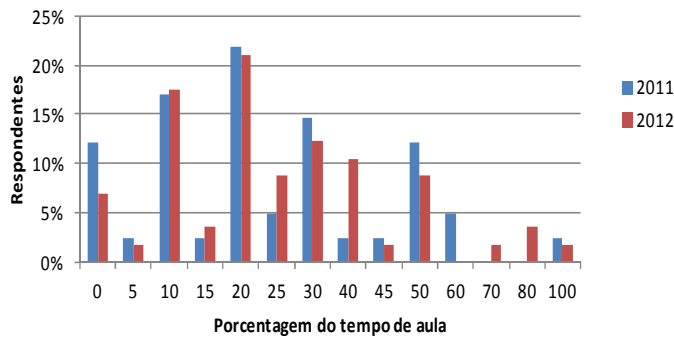
PESQUISA PROFESSORES TEMPO INTEGRAL
Metodologia de ensino: "lousa e giz"



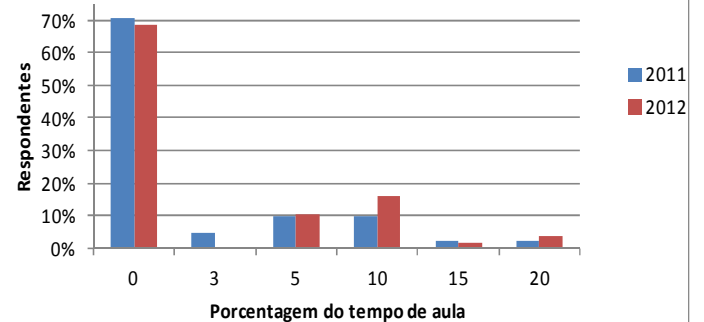
PESQUISA PROFESSORES TEMPO INTEGRAL
Metodologia de ensino: mídias eletrônicas



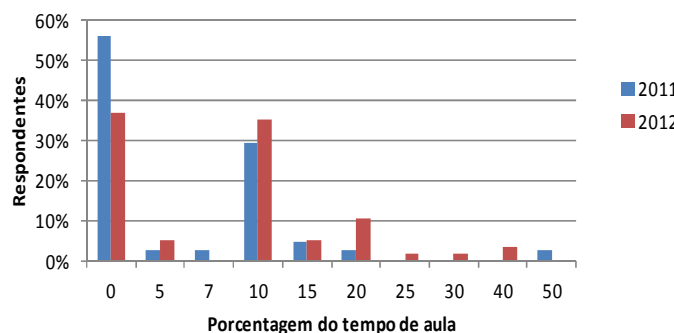
PESQUISA PROFESSORES TEMPO INTEGRAL
Metodologia de ensino: trabalho em equipe



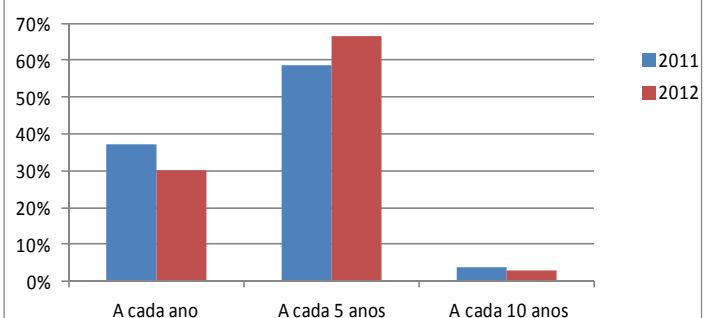
PESQUISA PROFESSORES TEMPO INTEGRAL
Metodologia de ensino: seminários

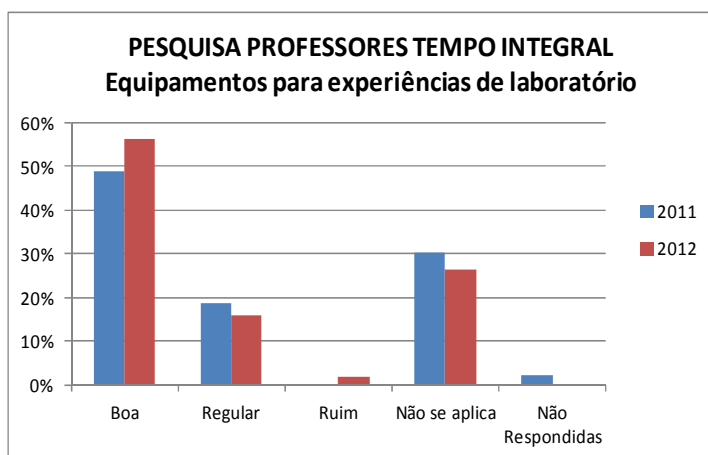
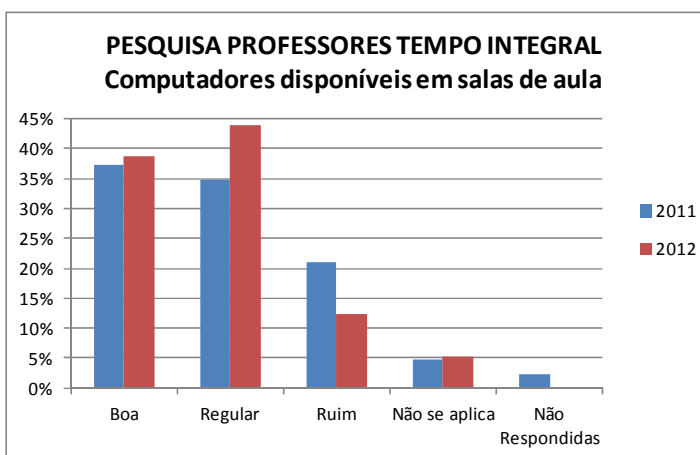
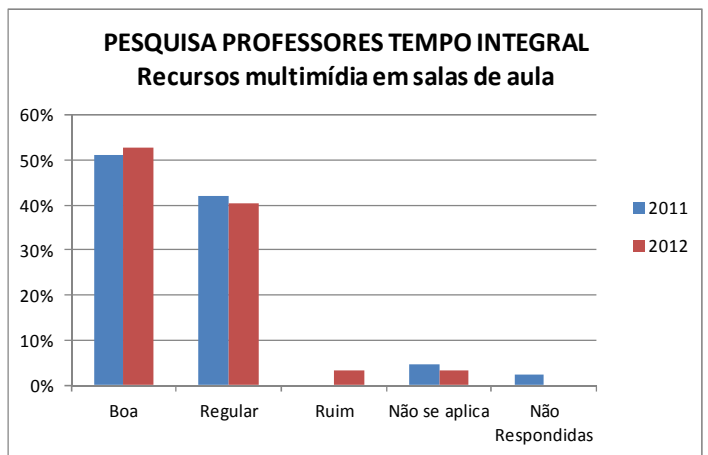
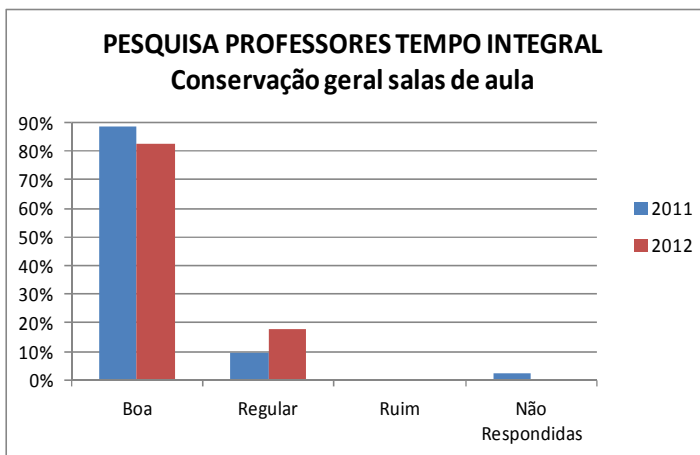
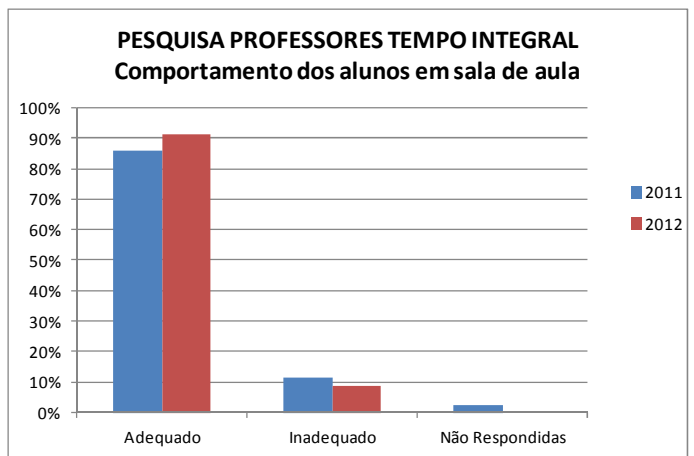
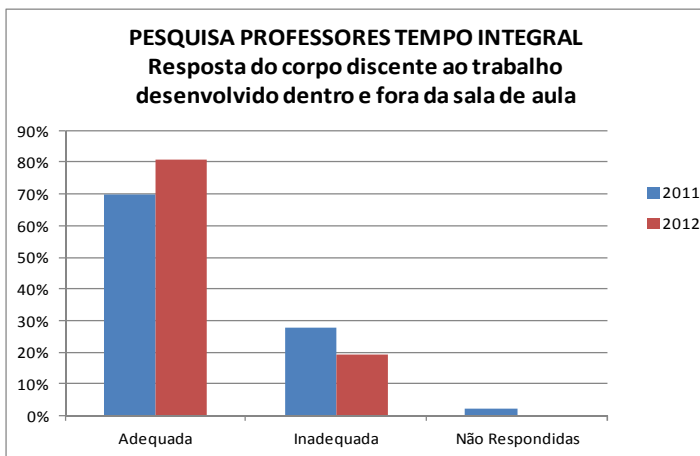
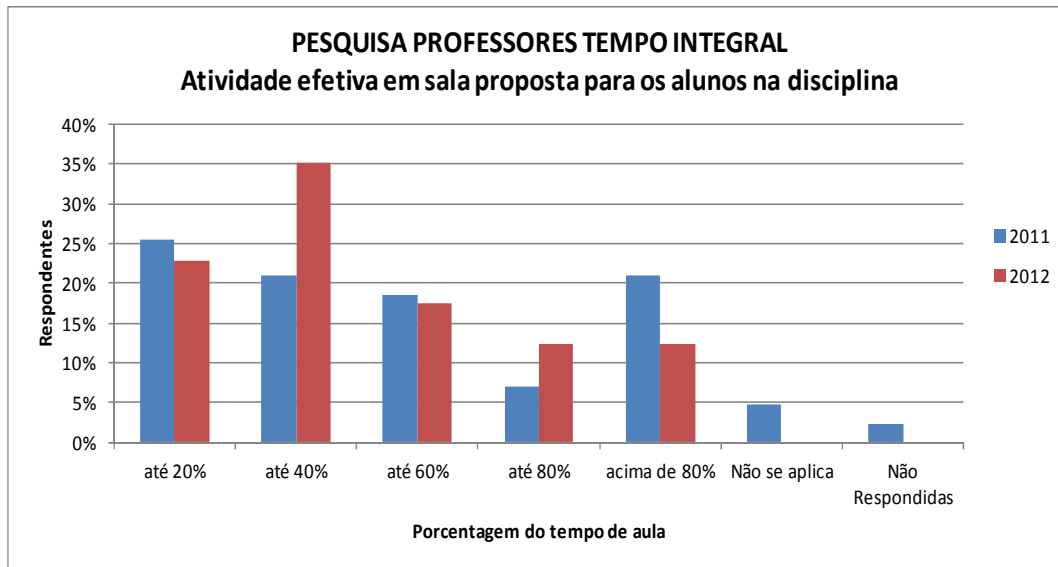


PESQUISA PROFESSORES TEMPO INTEGRAL
Metodologia de ensino: outras atividades

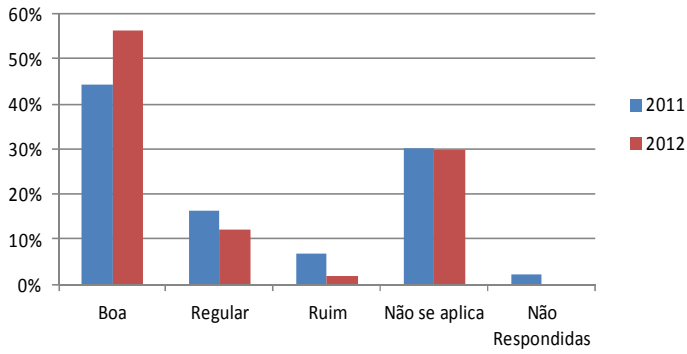


PESQUISA PROFESSORES TEMPO INTEGRAL
Intervalo entre atualizações da bibliografia da(s) disciplina(s)

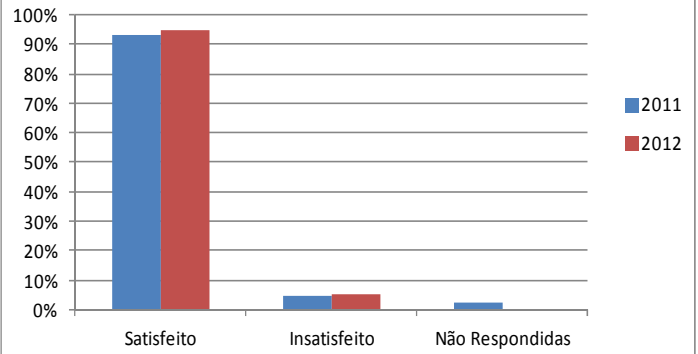




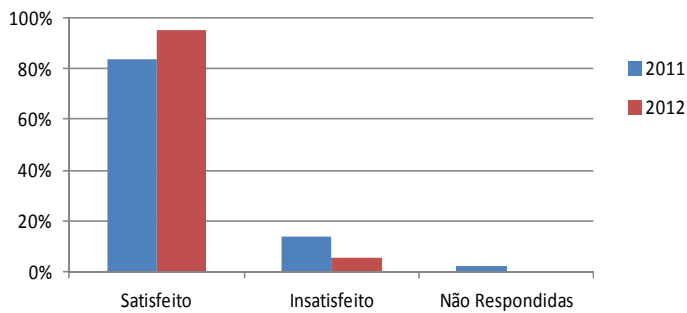
PESQUISA PROFESSORES TEMPO INTEGRAL
Trabalho dos laboratoristas



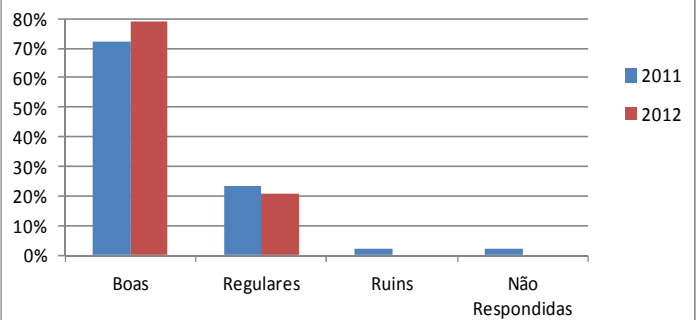
PESQUISA PROFESSORES TEMPO INTEGRAL
Com relação ao próprio trabalho no CEUN-IMT



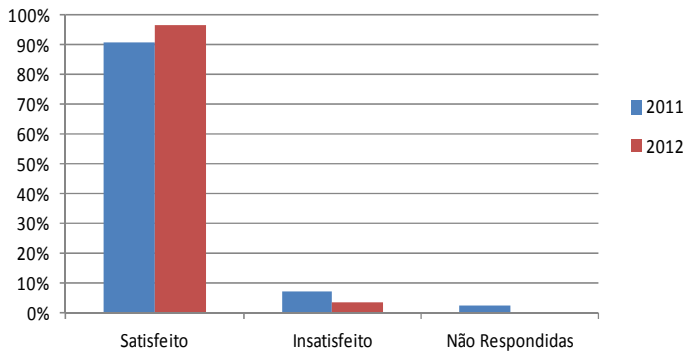
PESQUISA PROFESSORES TEMPO INTEGRAL
Com relação ao apoio do CEUN-IMT ao seu trabalho



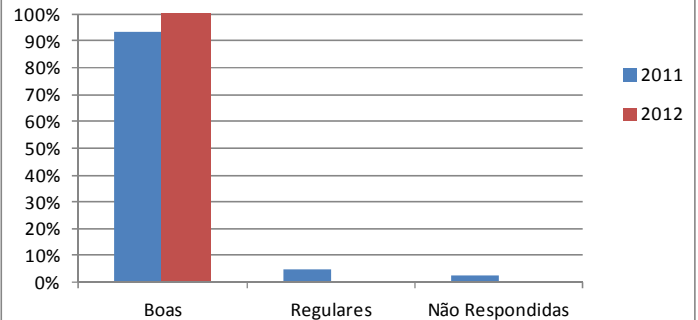
PESQUISA PROFESSORES TEMPO INTEGRAL
Forma e agilidade do atendimento da secretaria



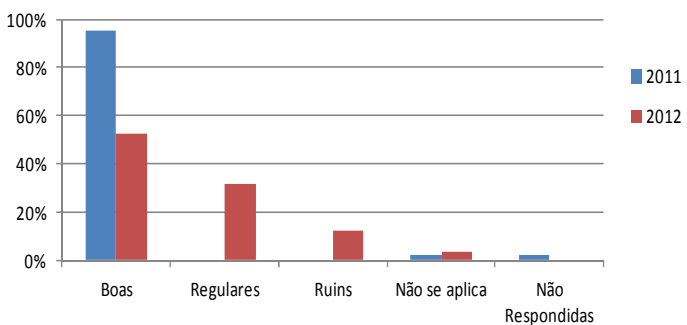
PESQUISA PROFESSORES TEMPO INTEGRAL
Com relação ao acervo da Biblioteca



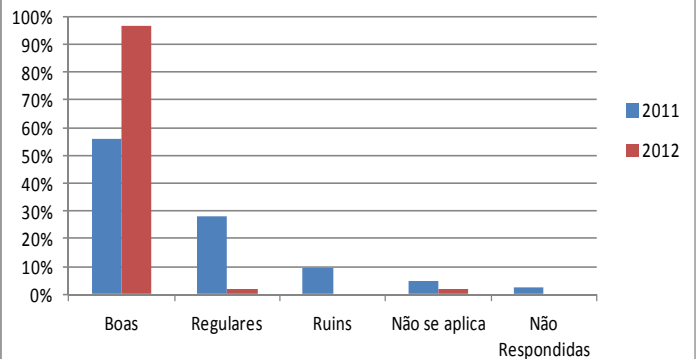
PESQUISA PROFESSORES TEMPO INTEGRAL
Forma e agilidade do atendimento da Biblioteca



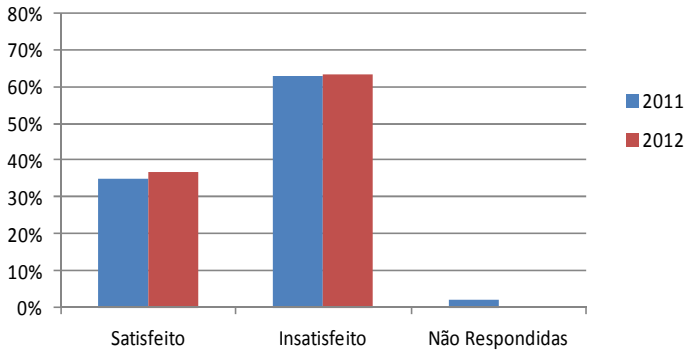
PESQUISA PROFESSORES TEMPO INTEGRAL
Forma e agilidade do atendimento do Núcleo de Métodos Computacionais (NMC)



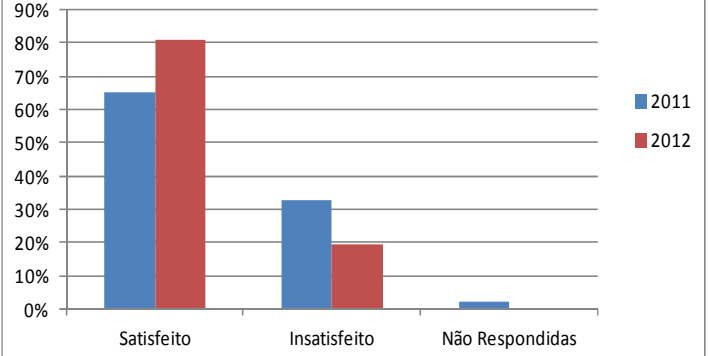
PESQUISA PROFESSORES TEMPO INTEGRAL
Forma e agilidade do atendimento do Setor Gráfico



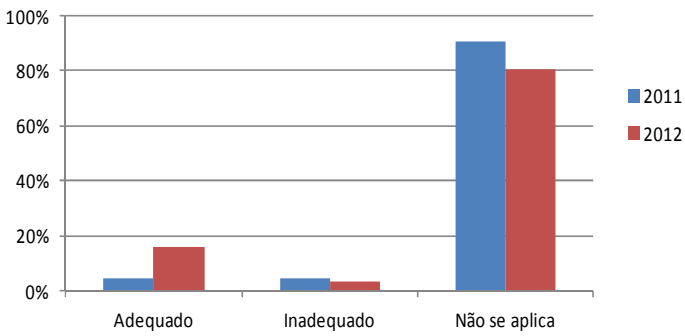
PESQUISA PROFESSORES TEMPO INTEGRAL
Velocidade do tráfego na rede de dados



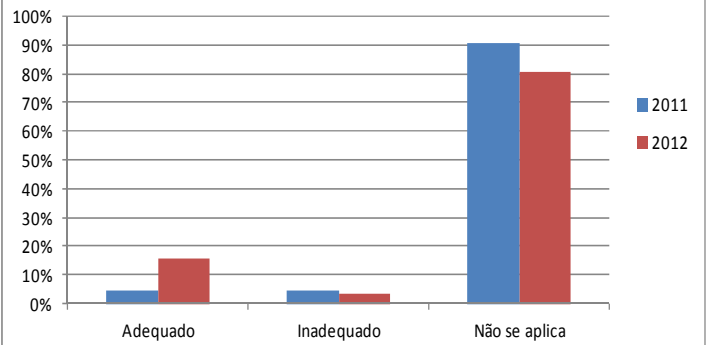
PESQUISA PROFESSORES TEMPO INTEGRAL
Sistema de lançamento de notas



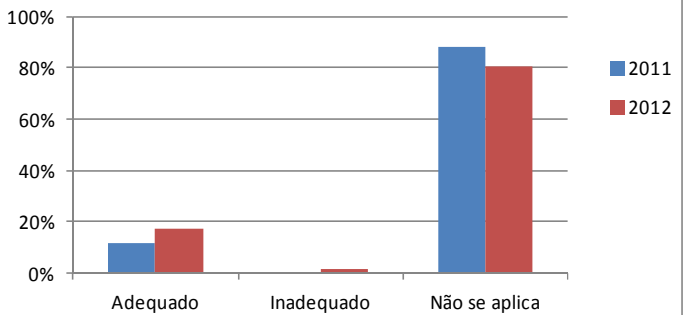
PESQUISA PROFESSORES TEMPO INTEGRAL
Lanchonete S Paulo - serviços e instalações



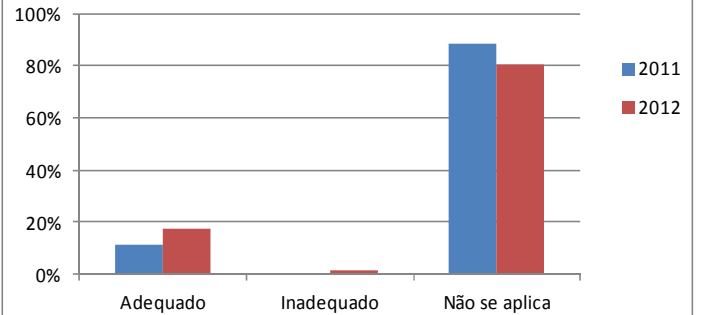
PESQUISA PROFESSORES TEMPO INTEGRAL
Lanchonete S Paulo - higiene e limpeza



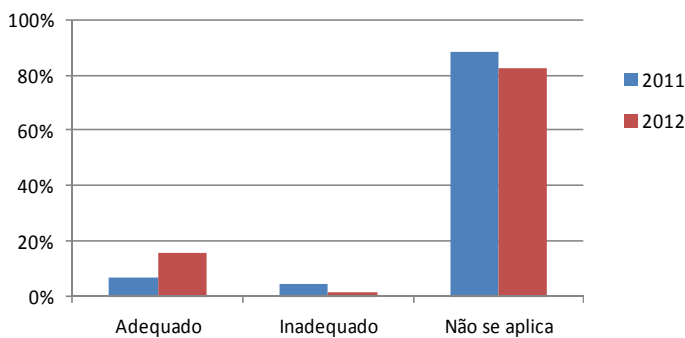
PESQUISA PROFESSORES TEMPO INTEGRAL
Lanchonete S Paulo - aparência dos funcionários



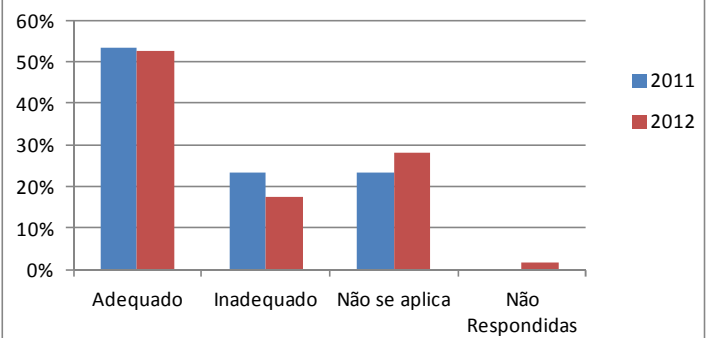
PESQUISA PROFESSORES TEMPO INTEGRAL
Lanchonete S Paulo - atendimento dos funcionários



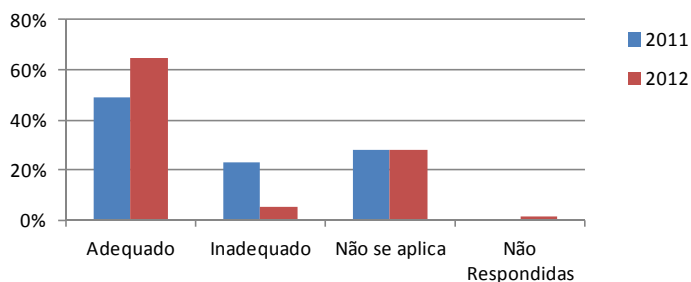
PESQUISA PROFESSORES TEMPO INTEGRAL
Lanchonete S Paulo - qualidade do preparo dos alimentos



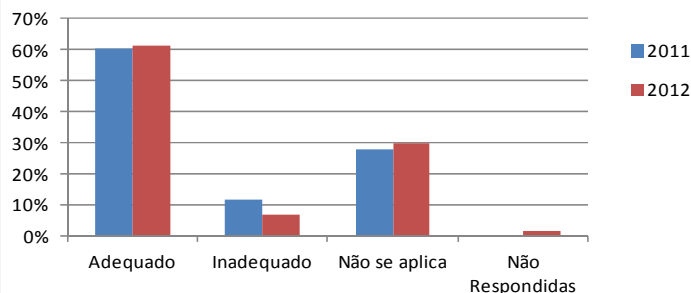
PESQUISA PROFESSORES TEMPO INTEGRAL
Restaurante (Bloco N) S C Sul - serviços e instalações



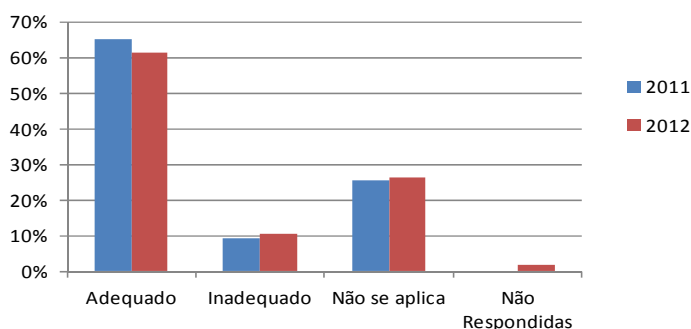
**PESQUISA PROFESSORES TEMPO INTEGRAL
Restaurante (Bloco N) S C Sul - higiene e
limpeza**



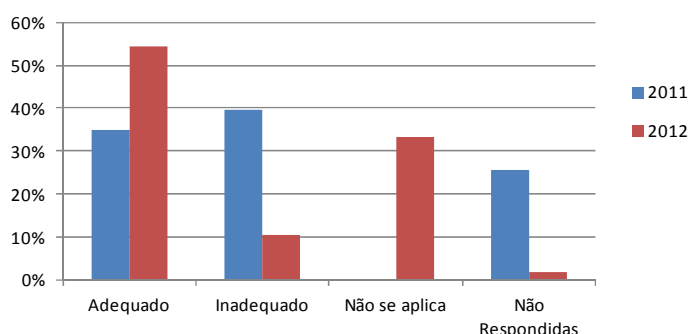
**PESQUISA PROFESSORES TEMPO INTEGRAL
Restaurante (Bloco N) S C Sul - aparência dos
funcionários**



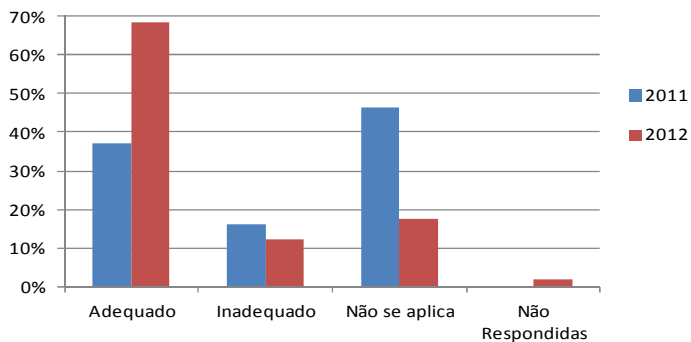
**PESQUISA PROFESSORES TEMPO INTEGRAL
Restaurante (Bloco N) S C Sul - atendimento
dos funcionários**



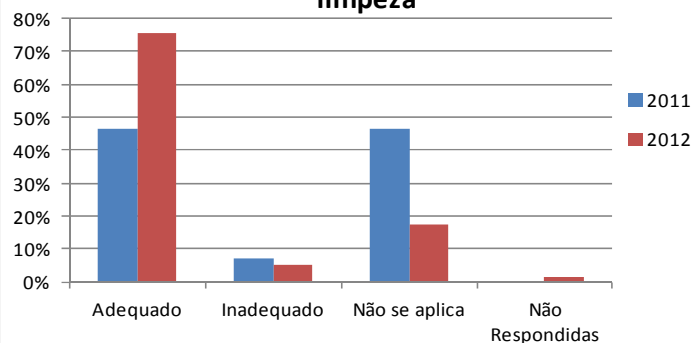
**PESQUISA PROFESSORES TEMPO INTEGRAL
Restaurante (Bloco N) S C Sul - qualidade do
preparo dos alimentos**



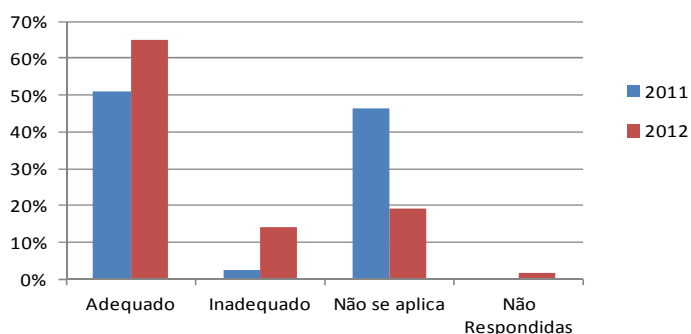
**PESQUISA PROFESSORES TEMPO INTEGRAL
Quiosque (próximo ao CA) S C Sul - serviços e
instalações**



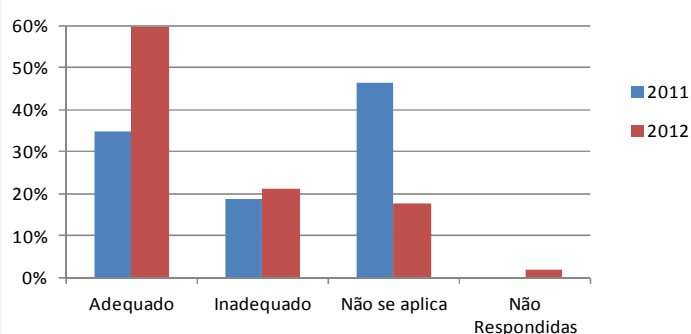
**PESQUISA PROFESSORES TEMPO INTEGRAL
Quiosque (próximo ao CA) S C Sul - higiene e
limpeza**



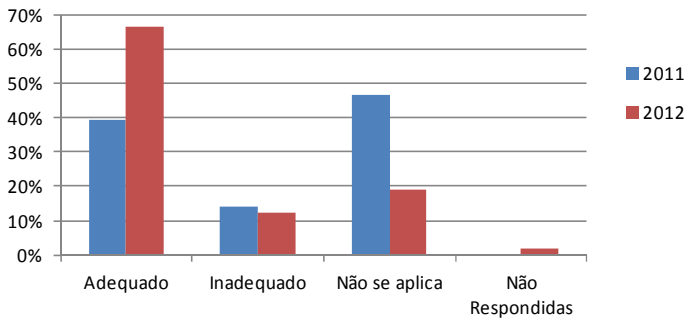
**PESQUISA PROFESSORES TEMPO INTEGRAL
Quiosque (próximo ao CA) S C Sul -
aparência dos funcionários**



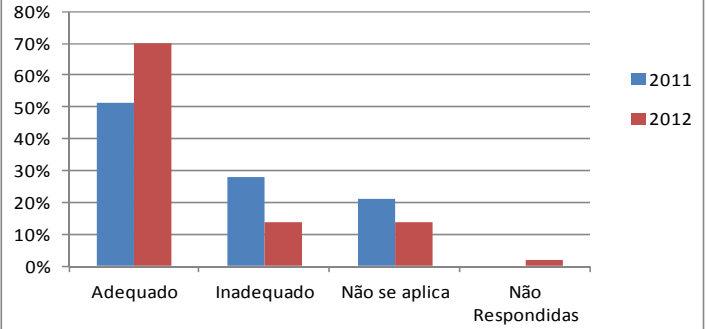
**PESQUISA PROFESSORES TEMPO INTEGRAL
Quiosque (próximo ao CA) S C Sul -
atendimento dos funcionários**



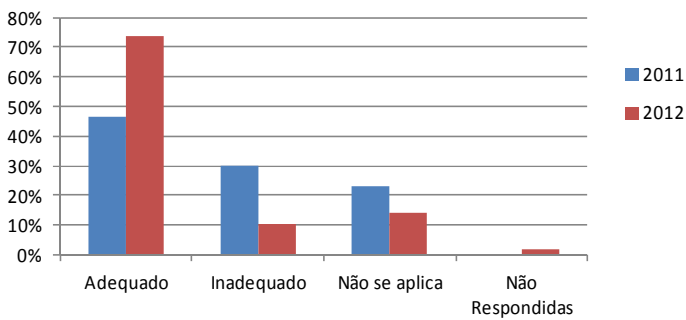
PESQUISA PROFESSORES TEMPO INTEGRAL
Quiosque (próximo ao CA) S C Sul - qualidade
do preparo dos alimentos



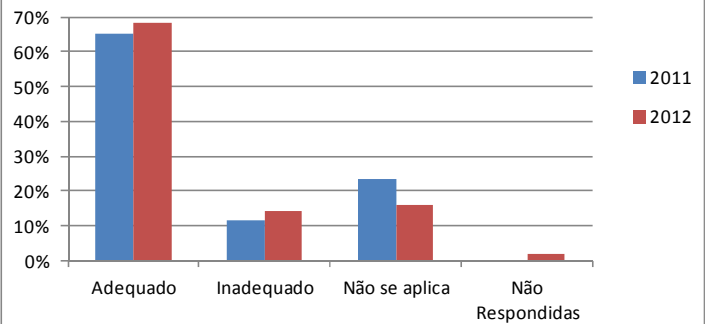
PESQUISA PROFESSORES TEMPO INTEGRAL
Lanchonete (Biblioteca) S C Sul - serviços e
instalações



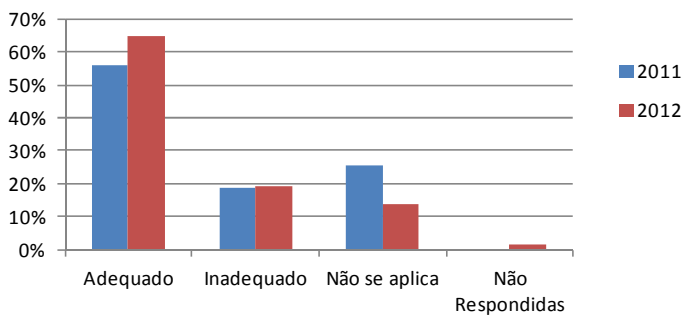
PESQUISA PROFESSORES TEMPO INTEGRAL
Lanchonete (Biblioteca) S C Sul - higiene e
limpeza



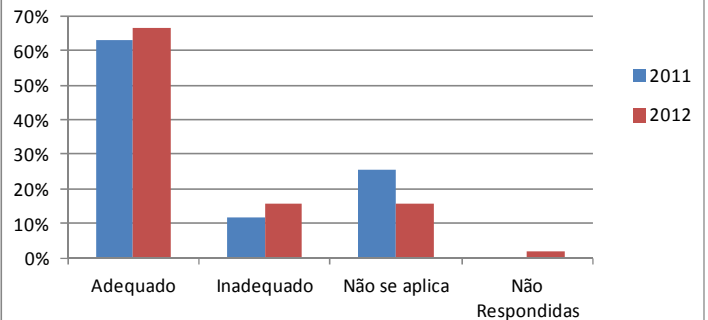
PESQUISA PROFESSORES TEMPO INTEGRAL
Lanchonete (Biblioteca) S C Sul - aparência dos
funcionários



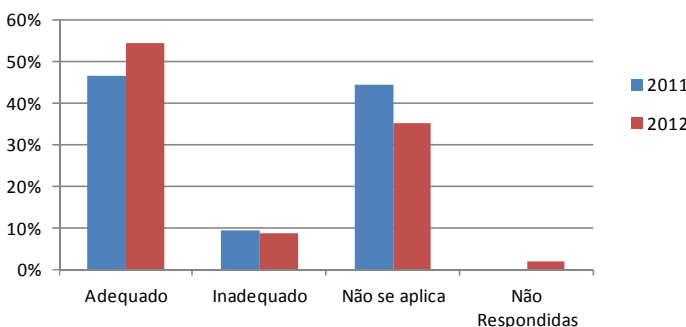
PESQUISA PROFESSORES TEMPO INTEGRAL
Lanchonete (Biblioteca) S C Sul -
atendimento dos funcionários



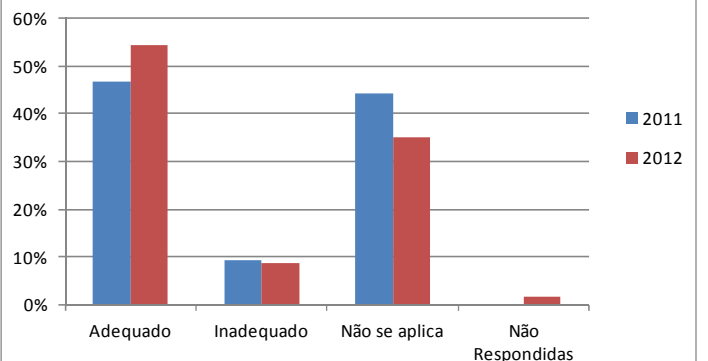
PESQUISA PROFESSORES TEMPO INTEGRAL
Lanchonete (Biblioteca) S C Sul - qualidade do
preparo dos alimentos



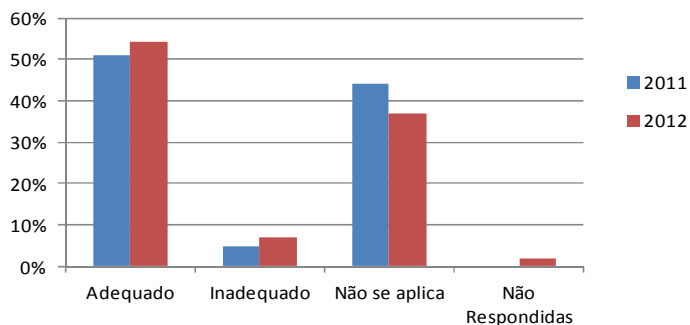
PESQUISA PROFESSORES TEMPO INTEGRAL
Lanchonete (CEAF) S C Sul - serviços e
instalações



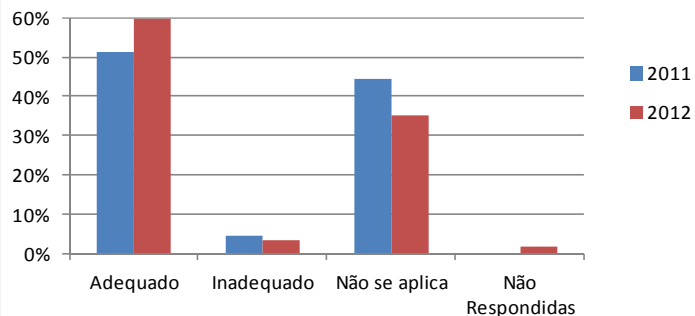
PESQUISA PROFESSORES TEMPO INTEGRAL
Lanchonete (CEAF) S C Sul - higiene e limpeza



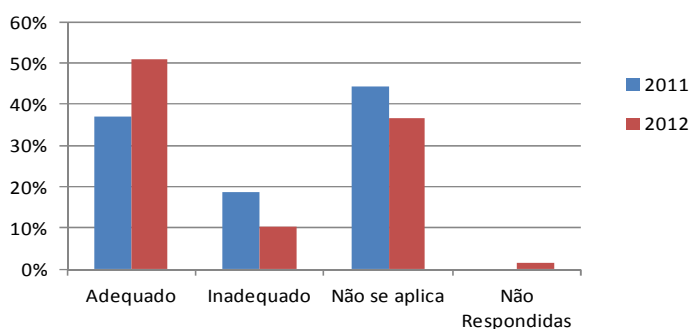
**PESQUISA PROFESSORES TEMPO INTEGRAL
Lanchonete (CEAF) S C Sul - aparência dos funcionários**



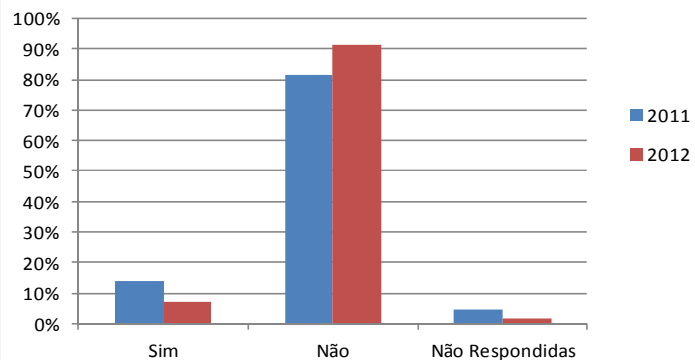
**PESQUISA PROFESSORES TEMPO INTEGRAL
Lanchonete (CEAF) S C Sul - atendimento dos funcionários**



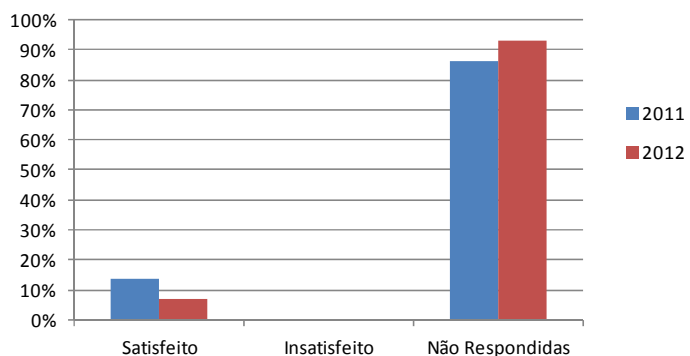
**PESQUISA PROFESSORES TEMPO INTEGRAL
Lanchonete (CEAF) S C Sul - qualidade do preparo dos alimentos**



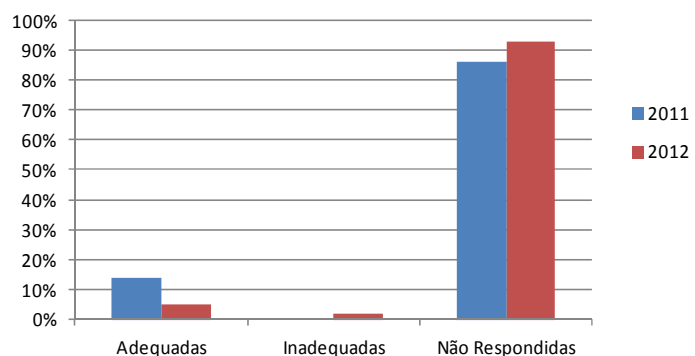
**PESQUISA PROFESSORES TEMPO INTEGRAL
É usuário assíduo do CEAF em S C Sul?**



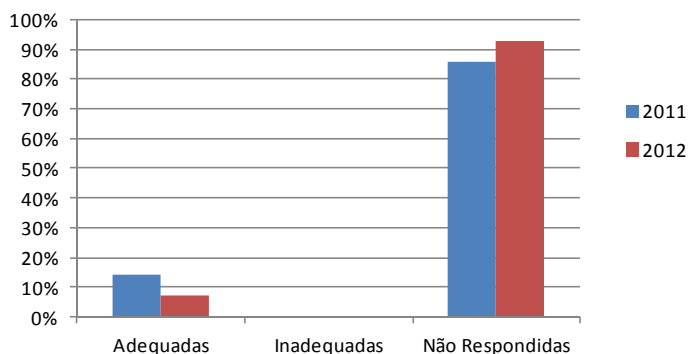
**PESQUISA PROFESSORES TEMPO INTEGRAL
Com relação aos serviços do CEAF em S C Sul**



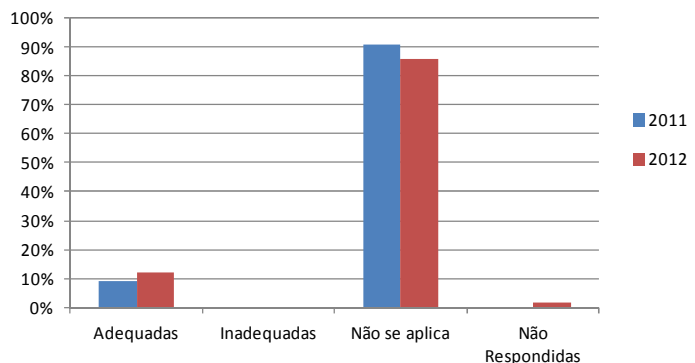
**PESQUISA PROFESSORES TEMPO INTEGRAL
Com relação às instalações do CEAF em S C Sul**



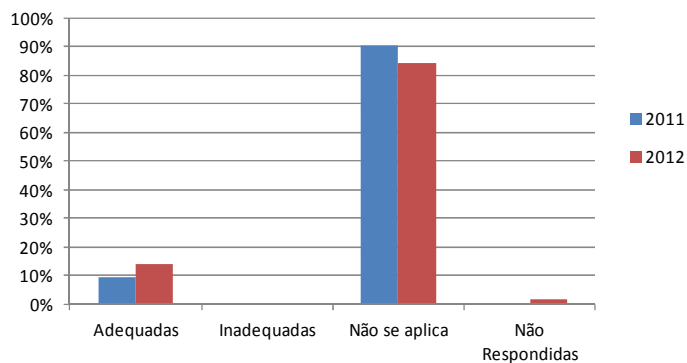
**PESQUISA PROFESSORES TEMPO INTEGRAL
Atividades oferecidas pelo CEAF em S C Sul**



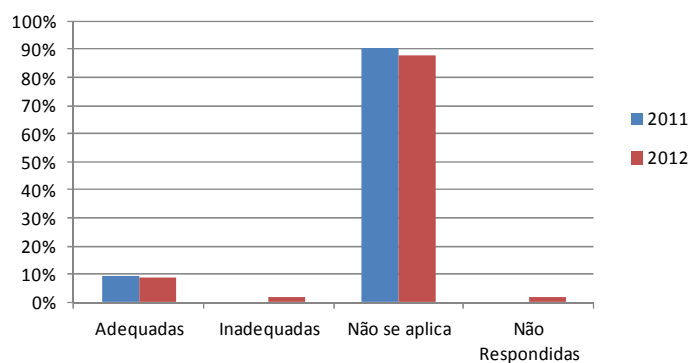
**PESQUISA PROFESSORES TEMPO INTEGRAL
Higiene e limpeza S Paulo - banheiros**



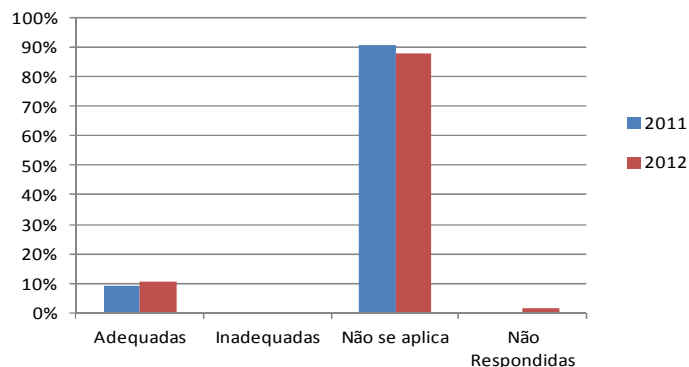
PESQUISA PROFESSORES TEMPO INTEGRAL
Higiene e limpeza S Paulo - ruas e calçadas



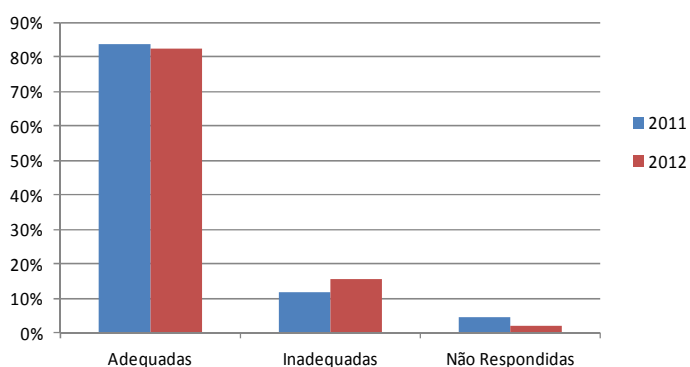
PESQUISA PROFESSORES TEMPO INTEGRAL
Higiene e limpeza S Paulo - salas de aula



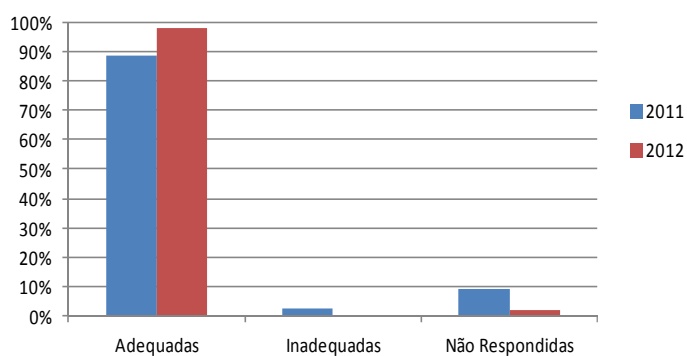
PESQUISA PROFESSORES TEMPO INTEGRAL
Higiene e limpeza S Paulo - salas de trabalho



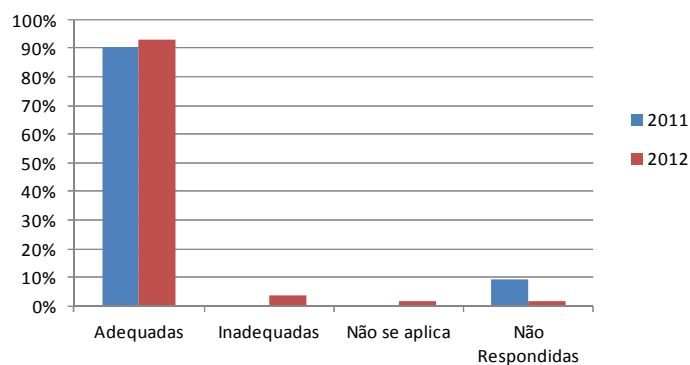
PESQUISA PROFESSORES TEMPO INTEGRAL
Higiene e limpeza S C Sul - banheiros



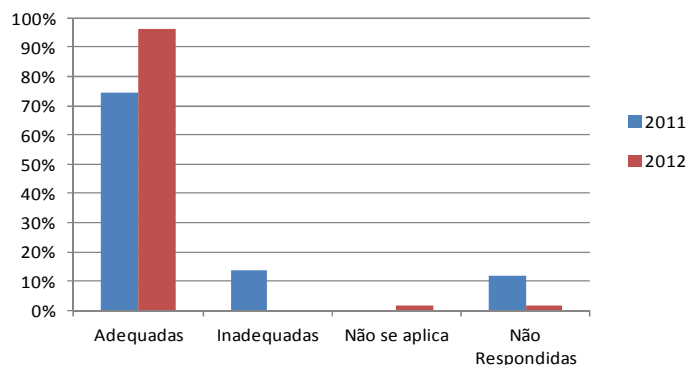
PESQUISA PROFESSORES TEMPO INTEGRAL
Higiene e limpeza S C Sul - ruas e calçadas



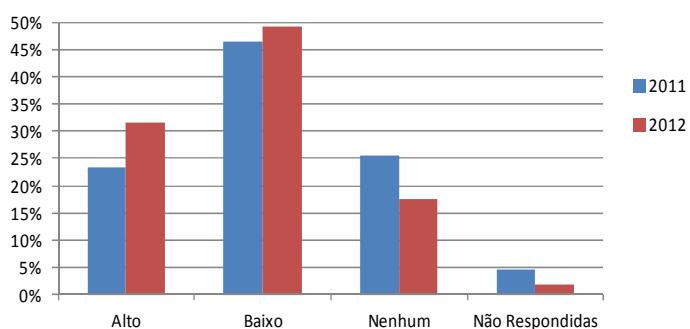
PESQUISA PROFESSORES TEMPO INTEGRAL
Higiene e limpeza S C Sul - salas de aula



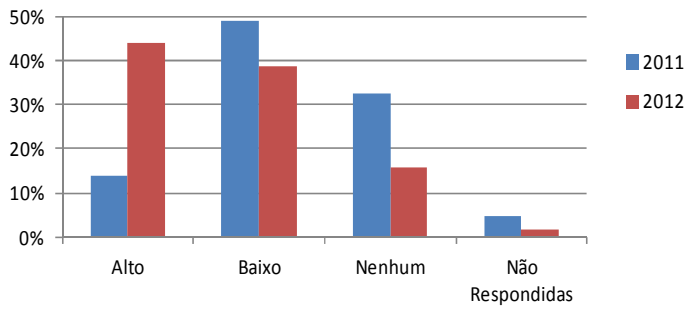
PESQUISA PROFESSORES TEMPO INTEGRAL
Higiene e limpeza S C Sul - salas de trabalho



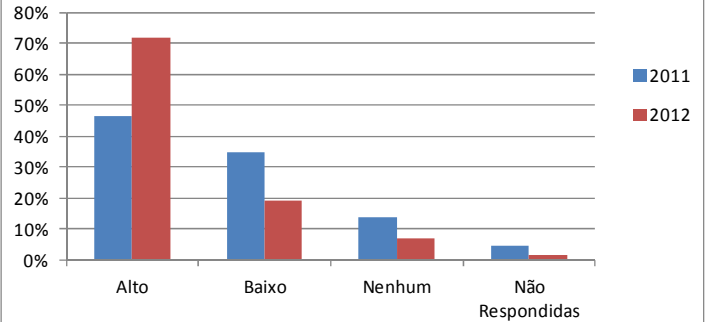
PESQUISA PROFESSORES TEMPO INTEGRAL
Grau de conhecimento do Plano de Desenvolvimento Institucional (PDI)



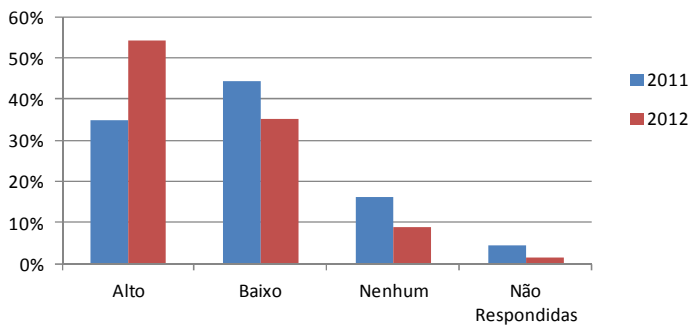
PESQUISA PROFESSORES TEMPO INTEGRAL
Grau de conhecimento do Plano Pedagógico
Institucional (PPI)



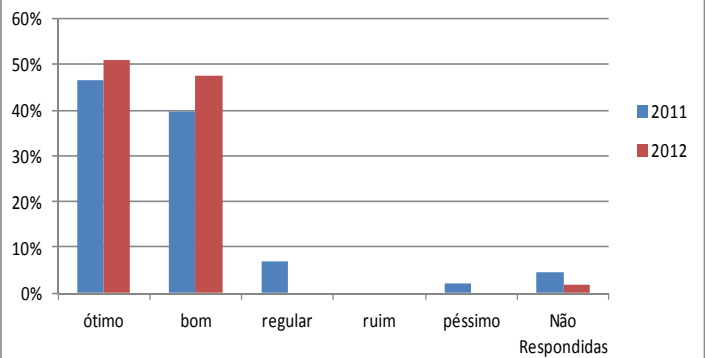
PESQUISA PROFESSORES TEMPO INTEGRAL
Grau de conhecimento do(s) Projeto(s)
Pedagógico(s) do(s) Curso(s) (PPC)



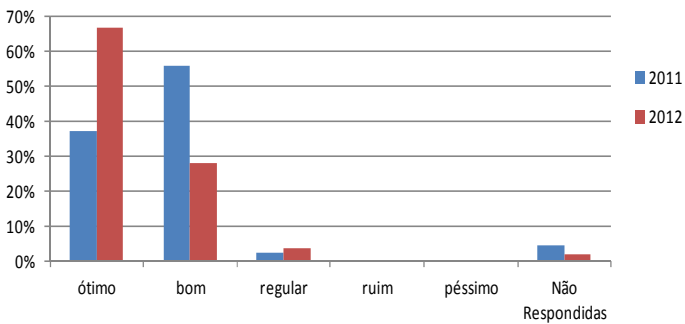
PESQUISA PROFESSORES TEMPO INTEGRAL
Grau de conhecimento sobre o plano de
carreira



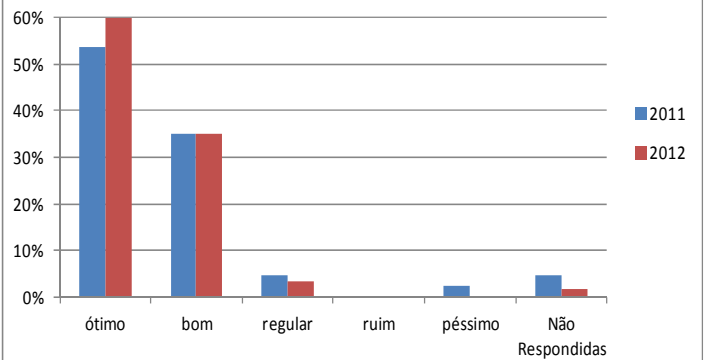
PESQUISA PROFESSORES TEMPO INTEGRAL
Relacionamento dos alunos com o professor



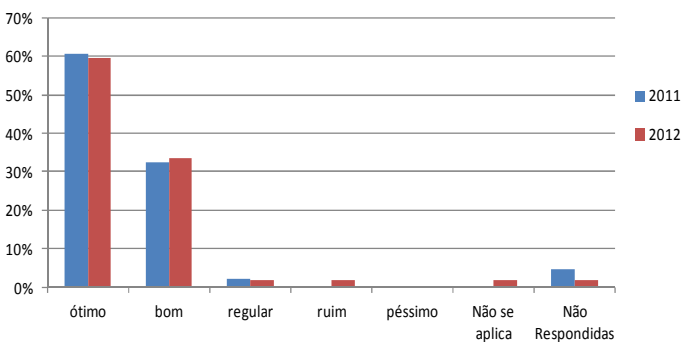
PESQUISA PROFESSORES TEMPO INTEGRAL
Relacionamento do(s) coordenador(es) de habilitação
com o professor



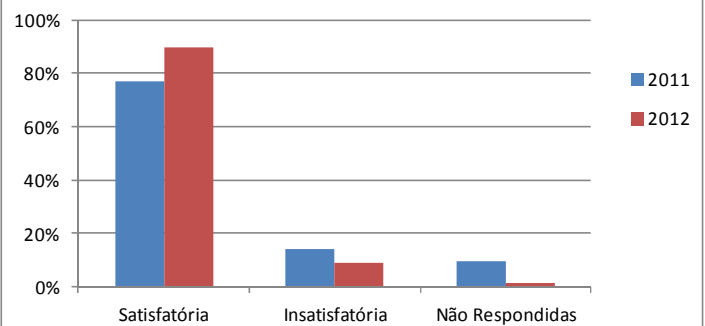
PESQUISA PROFESSORES TEMPO INTEGRAL
Relacionamento dos funcionários com o professor



PESQUISA PROFESSORES TEMPO INTEGRAL
Relacionamento com a Reitoria e/ou Diretoria com o
professor



PESQUISA PROFESSORES TEMPO INTEGRAL
Atuação do(s) coordenador(es) da(s) áreas do
professor



PESQUISA PROFESSORES TEMPO INTEGRAL
Classificação 2012: Cinco itens considerados mais importantes
(este quesito não fez parte da pesquisa 2011)

